



Exploring the Nebraska Rural Poll

2020

UNL Department of Agricultural Economics,
Nebraska Extension & University of Nebraska Rural Futures Institute

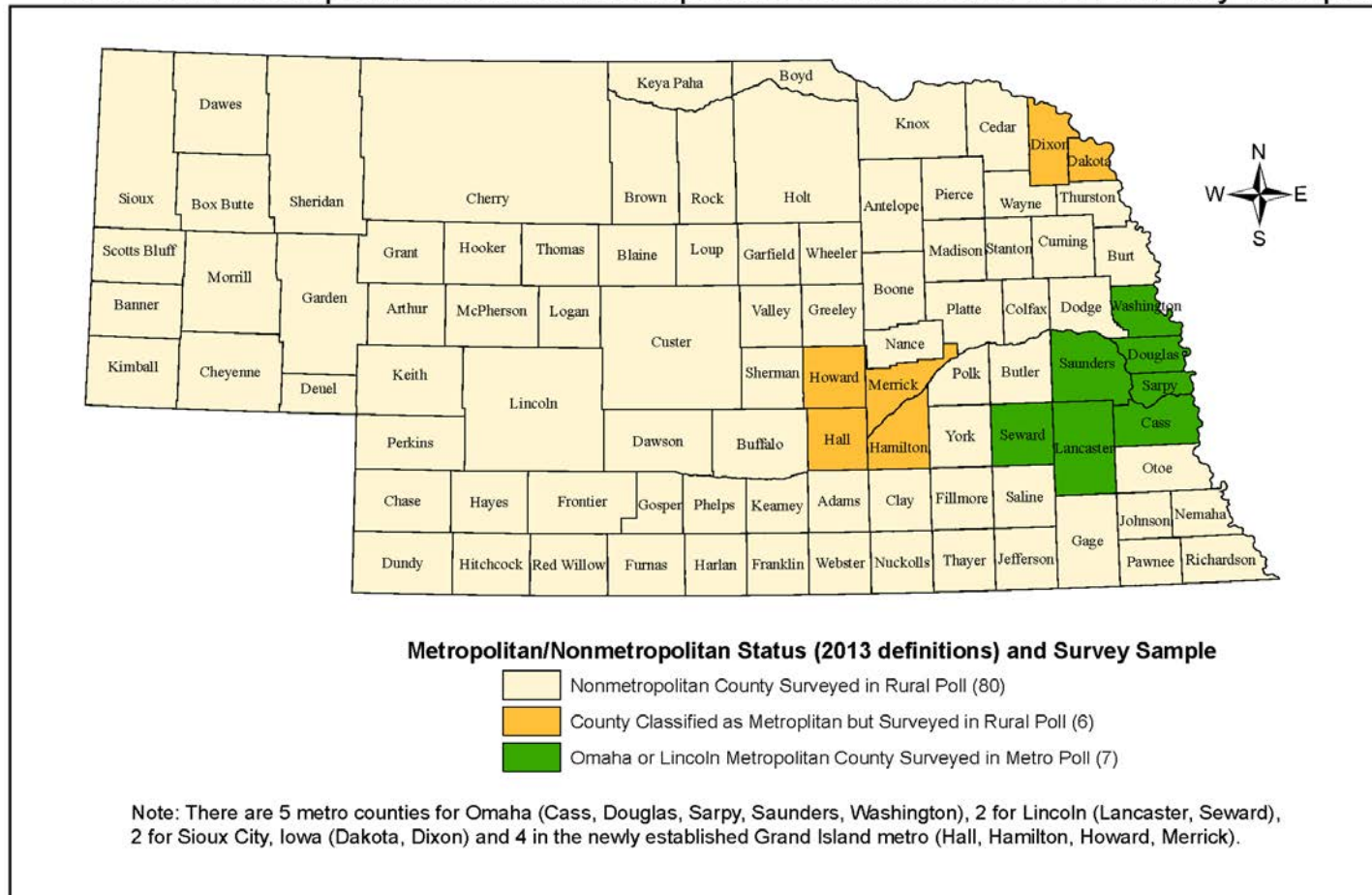


The Nebraska Rural Poll was initiated in 1996.

Over the past 24 years, input has been gathered from over 64,000 nonmetropolitan Nebraskans.

102 separate reports have been produced covering 31 unique topics

Nebraska Metropolitan and Nonmetropolitan Counties and 2014 Survey Sample



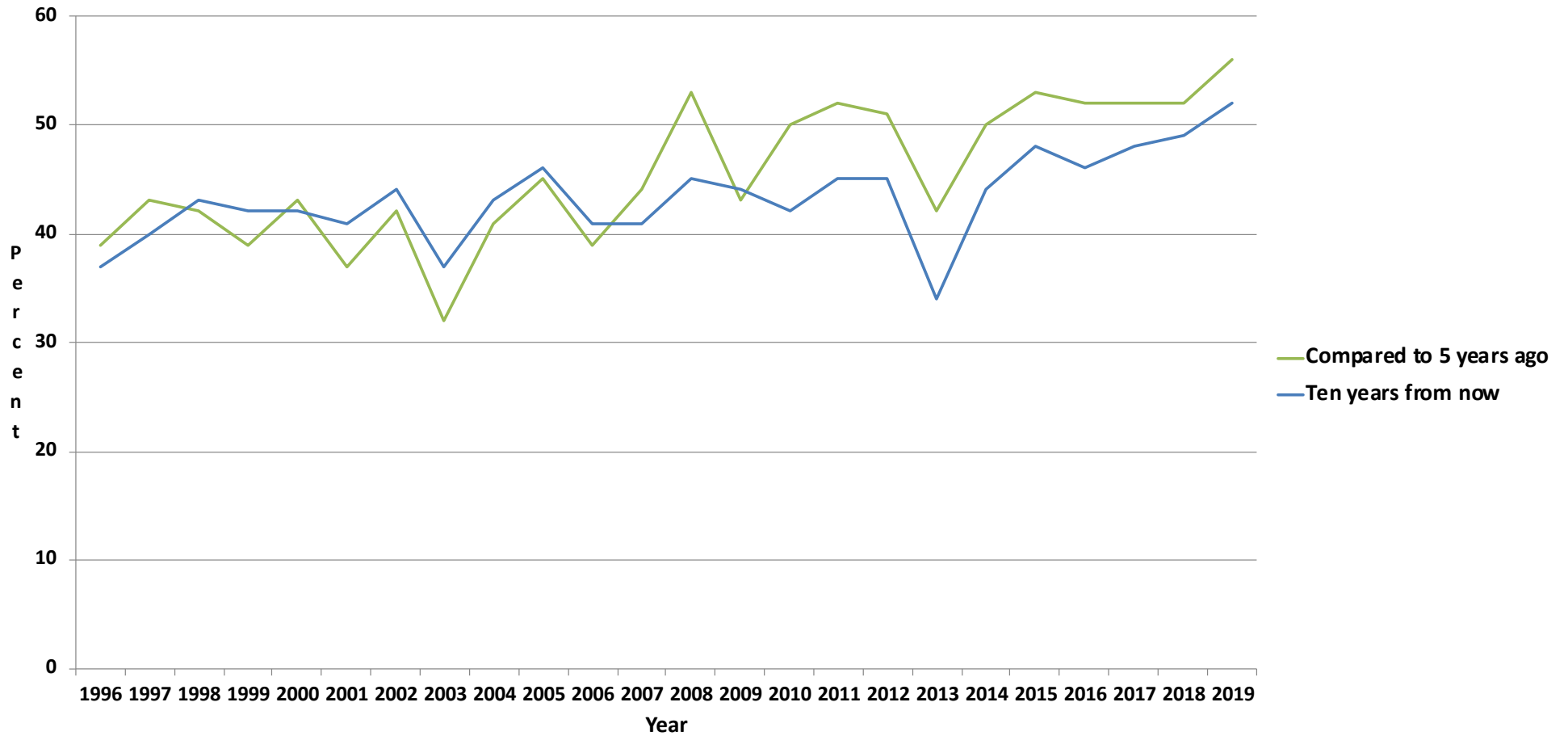
Source: 2013 Metropolitan and Micropolitan Definitions, Office of Management and Budget, released 2-28-13

Prepared by: David Drozd, Center for Public Affairs Research, University of Nebraska at Omaha - December 1, 2014

Trend Analysis

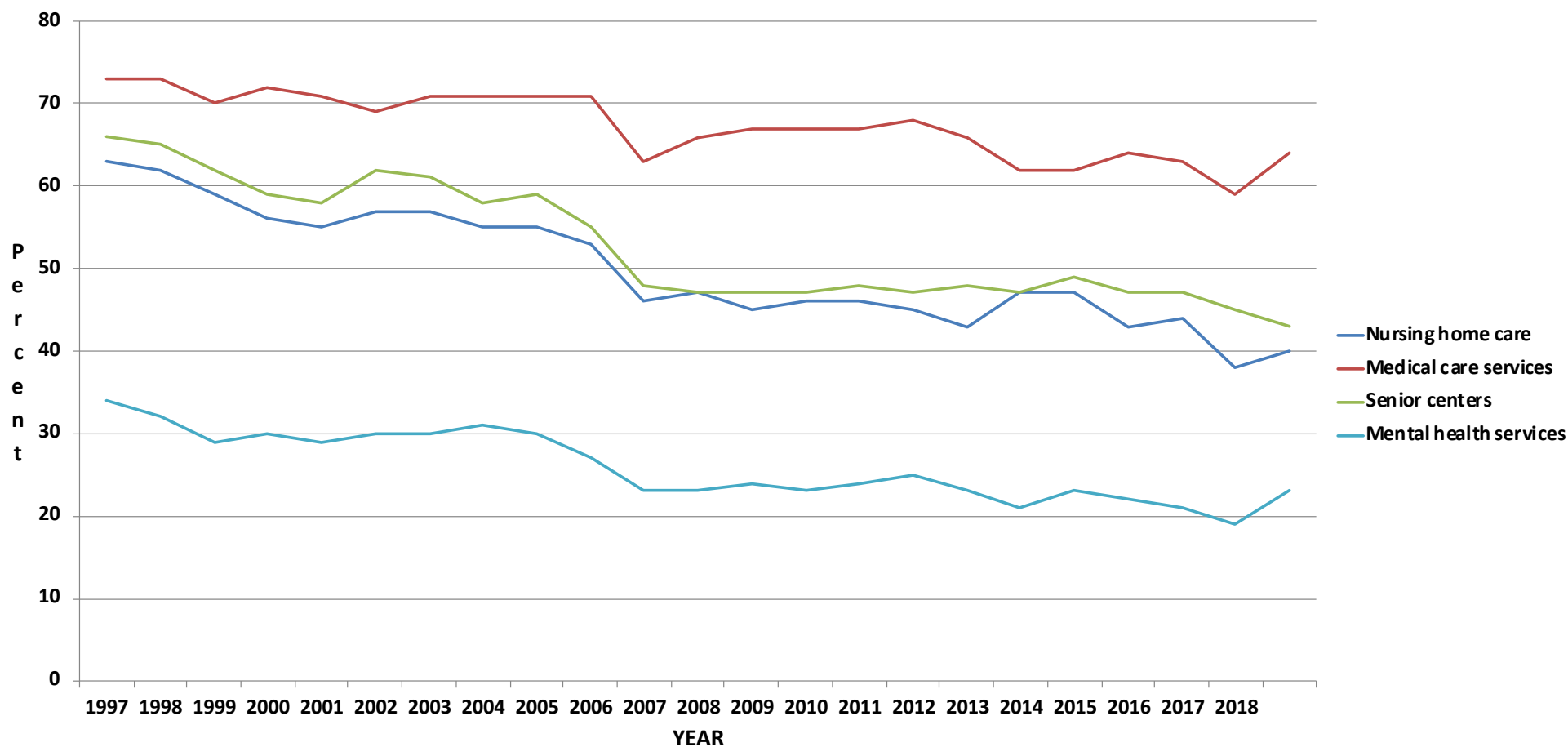


All things considered, do you think that you are (or will be) better or worse off
Percent Responding "Better Off" or "Much Better Off"

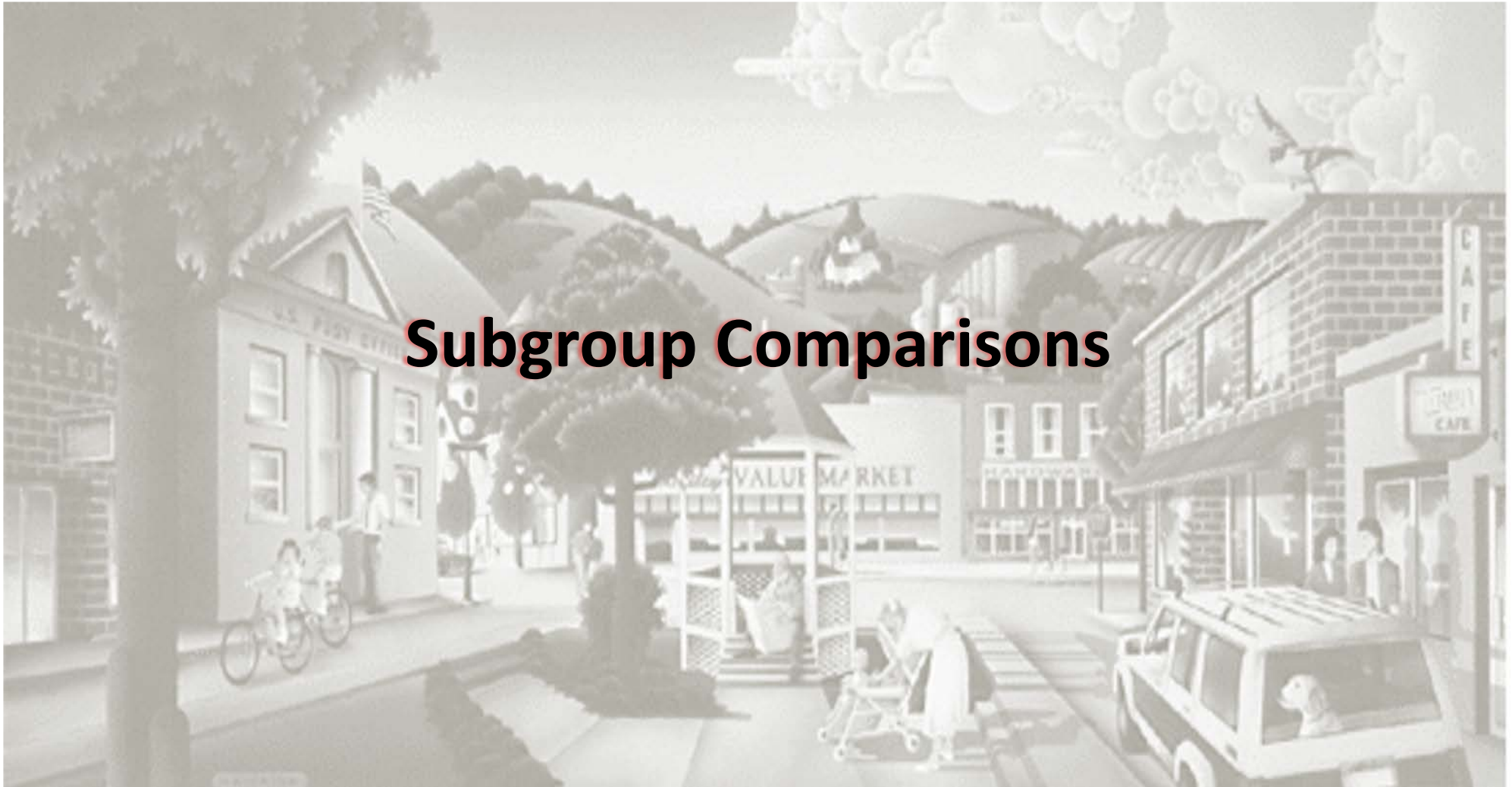


Reported Level of Satisfaction with Social Services in Community: 1996 - 2019

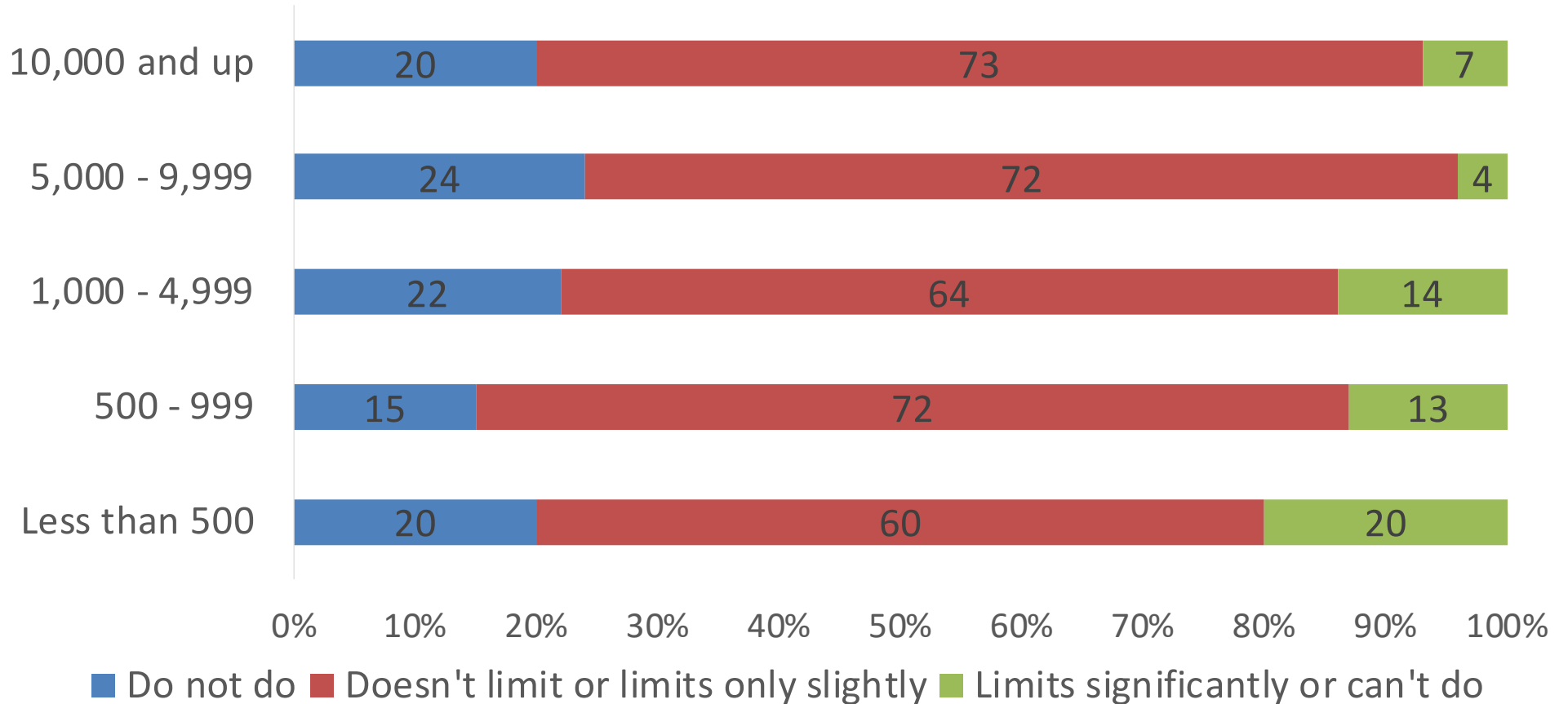
Percent Indicating "Satisfied" or "Very Satisfied"



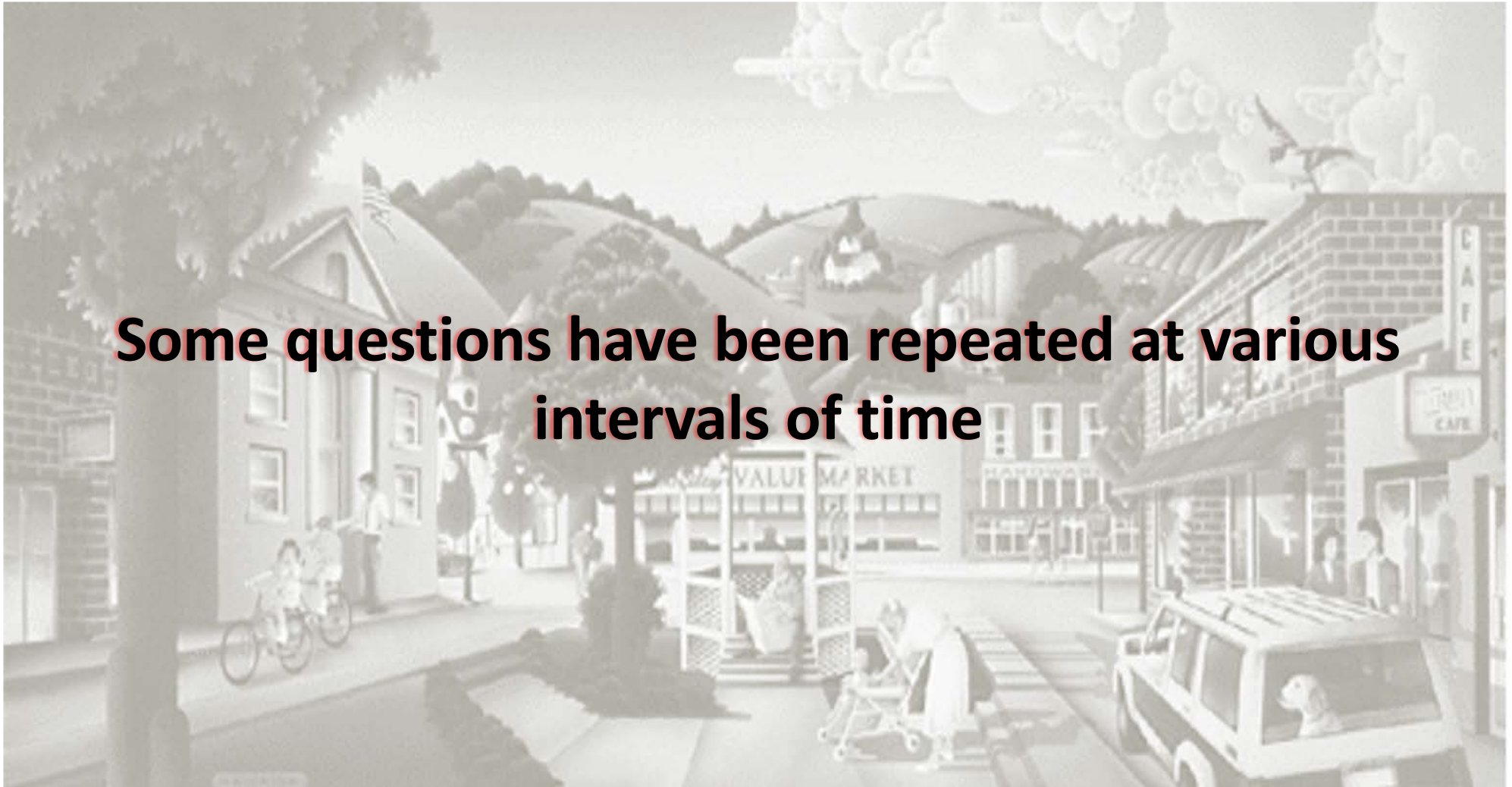
Subgroup Comparisons



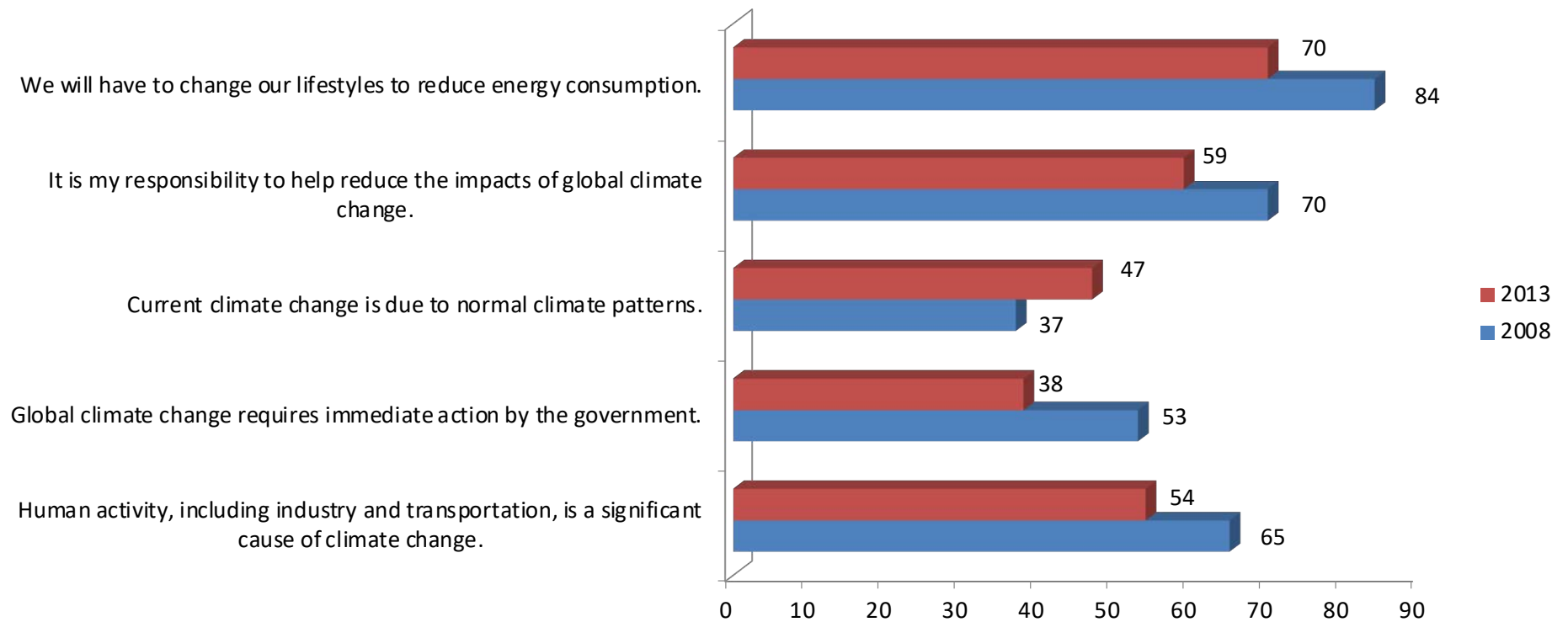
How Internet Service Limits Ability to Stream Online Video Content by Community Size, 2018



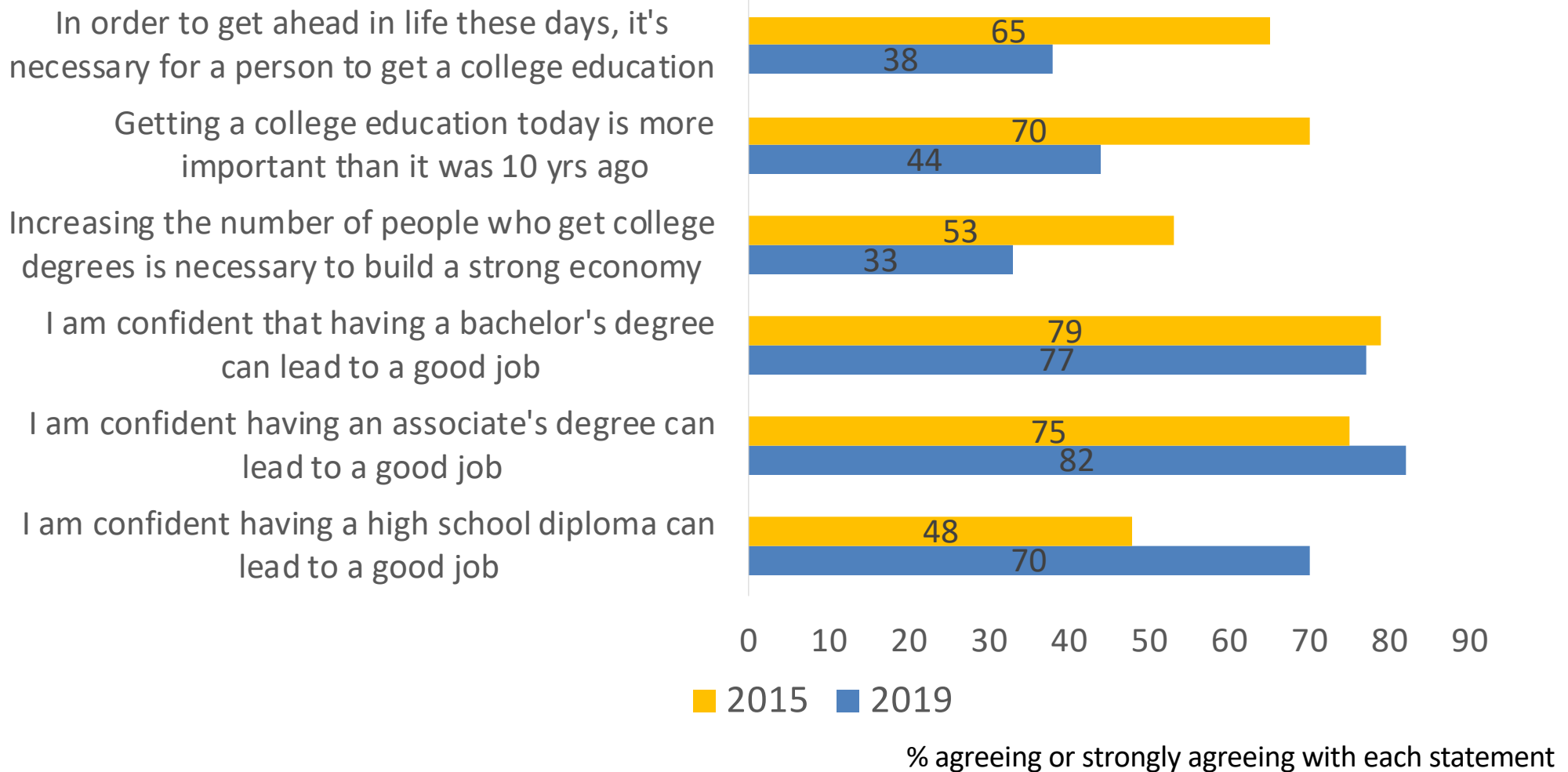
Some questions have been repeated at various intervals of time



Changes in Opinions about Climate Change



Opinions about Education, 2015 and 2019





All Nebraska Rural Poll reports from 1996 through 2019 can be found as PDF files here:

<http://ruralpoll.unl.edu/>

Reports are available by year or by topics

**For additional information regarding the Nebraska Rural Poll
OR to suggest topics for future surveys, please contact any of
the current Nebraska Rural Poll Team.**

Rebecca Vogt

rvogt2@unl.edu

Cheryl Burkhardt-Kriesel

cburkhardt-kriesel1@unl.edu

Bradley Lubben

blubben2@unl.edu

L.J. McElravy

lj.mcelravy@unl.edu

Tim Meyer

tmeyer19@unl.edu

Steve Schulz

sschulz@unomaha.edu

Jason Weigle

jason.weigle@unl.edu



**Supported by: Nebraska Extension, Nebraska Rural Futures Institute, UNL
Department of Agricultural Economics.**