



---

# DISASTER!

Protect Yourself & Your Research

---

# Agenda

- Housekeeping
- Background
- What is a Disaster?
- Plans – The Obvious & Not so Obvious
- Emergency Management Response
- Resources
- Magic Trick
- Exercise



# What Does This Guy Know?

- Background
- Role here at the University
- Lab knowledge



**WHAT IS A DISASTER?**





# Purdue January 9, 2014

- Biochemistry building
- 4 inch water line ruptured
- Flooded all four floors of the building
- Five labs shut down to assess damage



Purdue Agricultural Communication photo/Tom Campbell



# May 16, 2014

- Stony Brook University on Long Island
  - Explosion damaged a science lab
  - Two students sent to hospital
  - Earth and Space Science Building evacuated



WABC-TV New York



# Iowa State University, May 30, 2014

- Laboratory Fire
  - Labs, equipment and offices damaged by smoke and water
  - Department chairman says the greatest losses are the projects graduate students have been working on for months



13 WHO TV





# UCLA July 30, 2014

- Sunset Boulevard
- 8 to 10 MILLION gallons



KTLA 5 News





# What are other possible disasters?

- Cyber loss
- Weather
- Utilities
- Fire
- Hazardous Materials



# You are the Expert

- What can you do to be more self-sufficient?
- What could you do to be more resilient?
- What can you do to mitigate the effects of disasters?



# Plans

**When you know,  
it's obvious.**



Follow us on twitter

@PrepareUNL



Really Obvious: Plans

<https://www.youtube.com/watch?v=xxWC2qZzFbc>





# Your Personal Safety Plan

- Be aware of your environment and any possible dangers
- Take note of the two nearest exits in any facility you visit
- Know when and where to shelter
- Resources
  - [ehs.unl.edu](http://ehs.unl.edu)
  - [emergency.unl.edu](http://emergency.unl.edu)
  - UNL Police Situational Awareness Training



# Building Safety Plan

- Building Emergency Coordinators
  - Floor/Area Coordinators
- Emergency Actions
  - Evacuation
  - Shelter in Place
  - Shelter Locations
- Persons needing assistance
- Assembly areas
- Warning systems
- Secure or hazardous locations
- Template online: Faculty, Staff & Departments



# Business Continuity Plan

- Leadership Succession
- Essential Functions
- Communication
- Mitigation Strategies
- Recovery
- Special Considerations for you Department
- Key Internal (Within UNL) Dependencies
- Key External Dependencies
- Additional Information
- Submission to [preparedness@unl.edu](mailto:preparedness@unl.edu)





# UNL Alert

- Campus automated notification
- Make sure your contact info is current
- Methods of delivery
  - Text
  - Email
  - Social Media (Twitter & Facebook)
  - Digital Signs
  - [unl.edu](http://unl.edu)
  - Alertus



# UNL Alert

- Consider what actions you may want to take for specific scenarios
  - If time permits are there procedures that should be included in our standard procedures?
  - Secure areas
  - Shelter
  - Evacuation procedures
  - Equipment



# Reporting Emergencies

- University Police 402-472-2222
- Medical Emergency 911





Response

# **EMERGENCY MANAGEMENT**

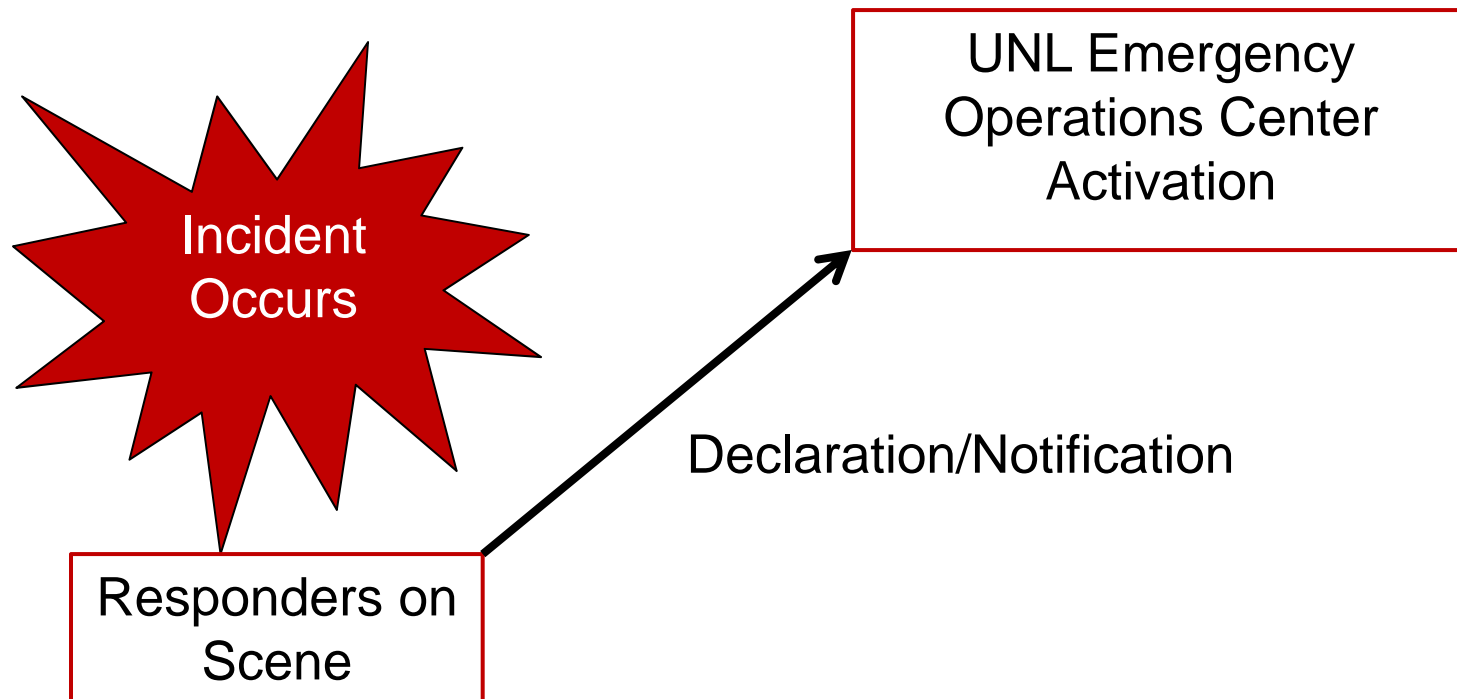


# Emergency Management Plans

- Incident Management
  - Emergency Life Safety
  - Scene stabilization
- Emergency Operations Center
  - Support
  - Coordination

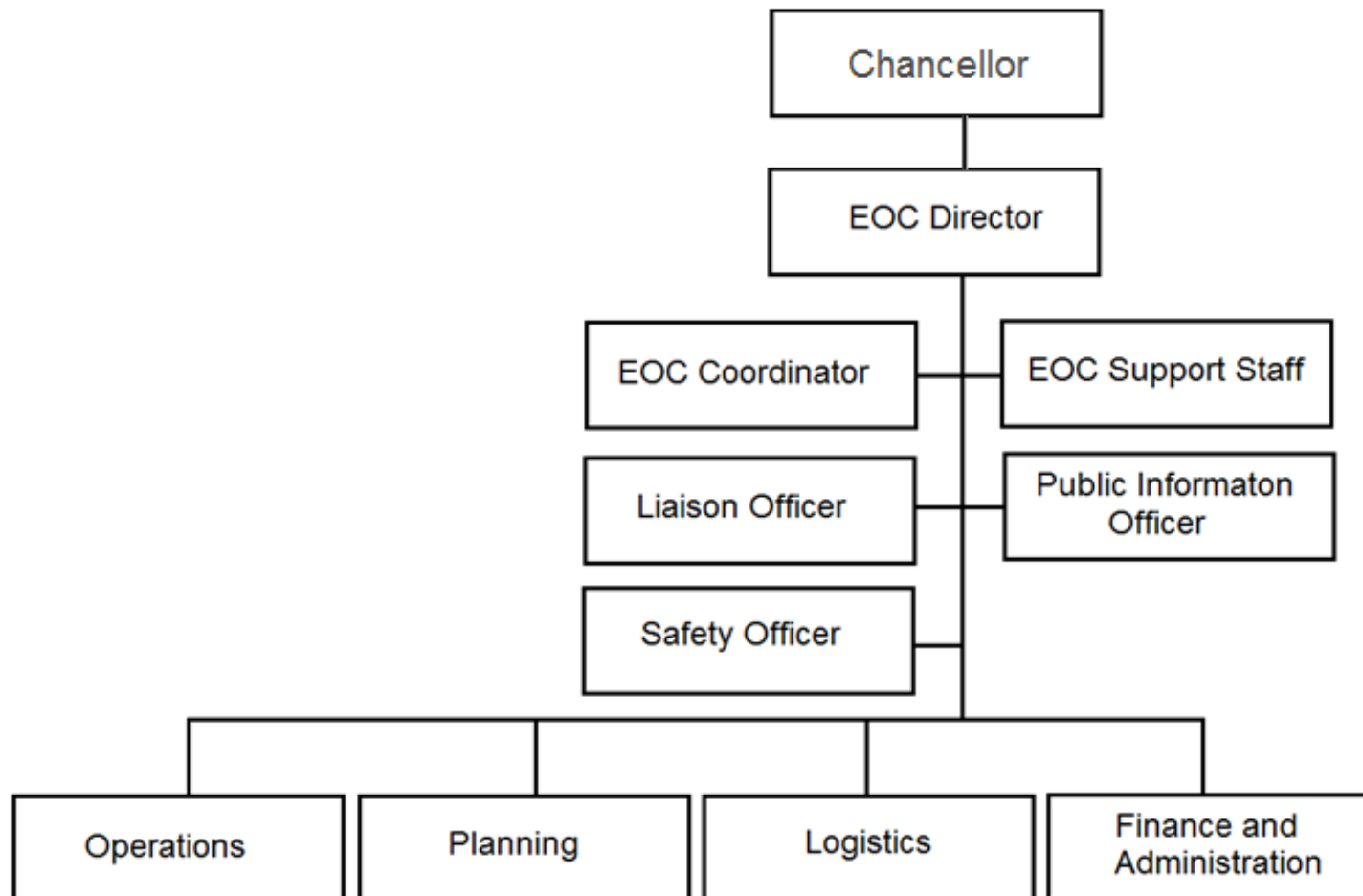


# UNL Response to Emergency/Disaster

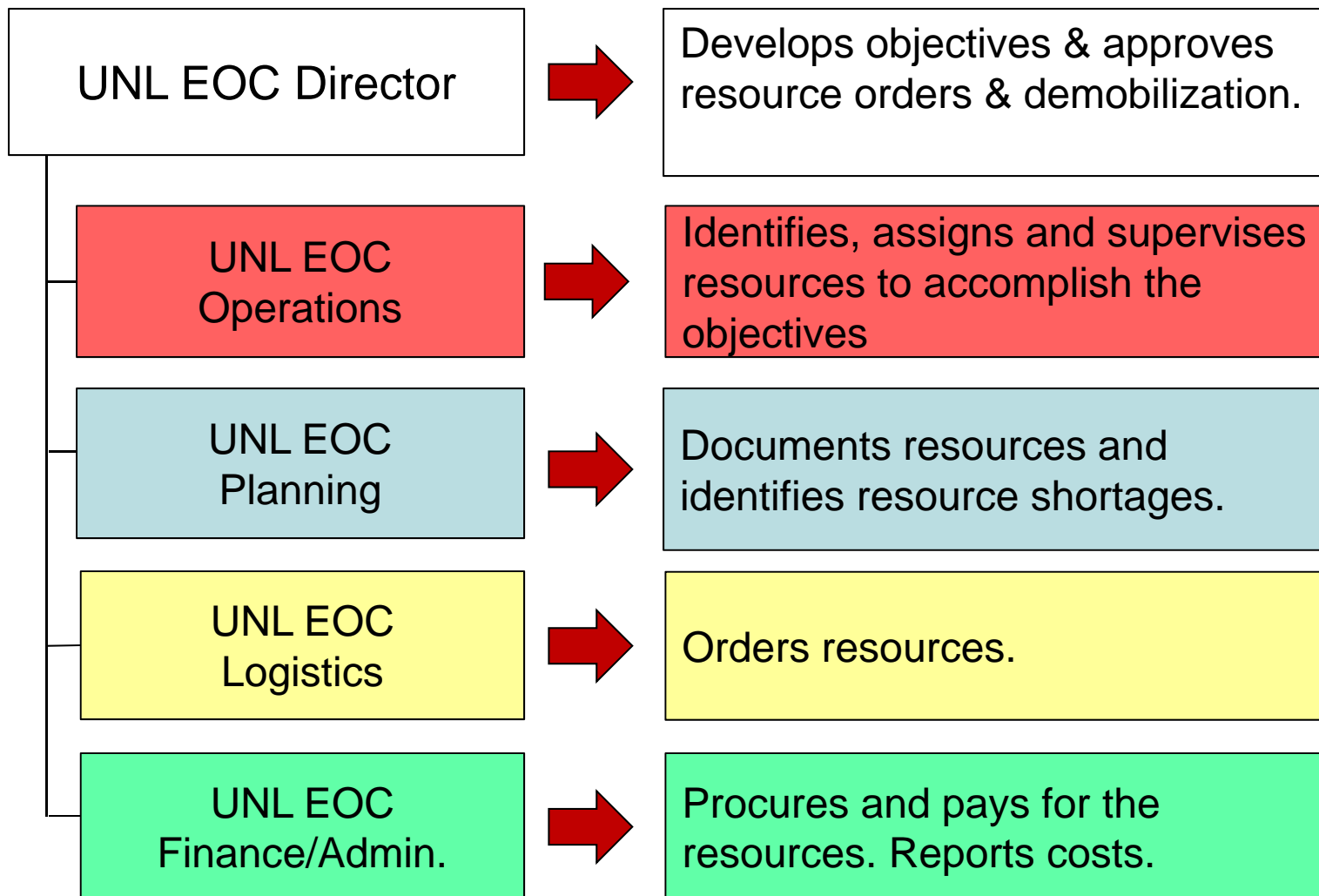


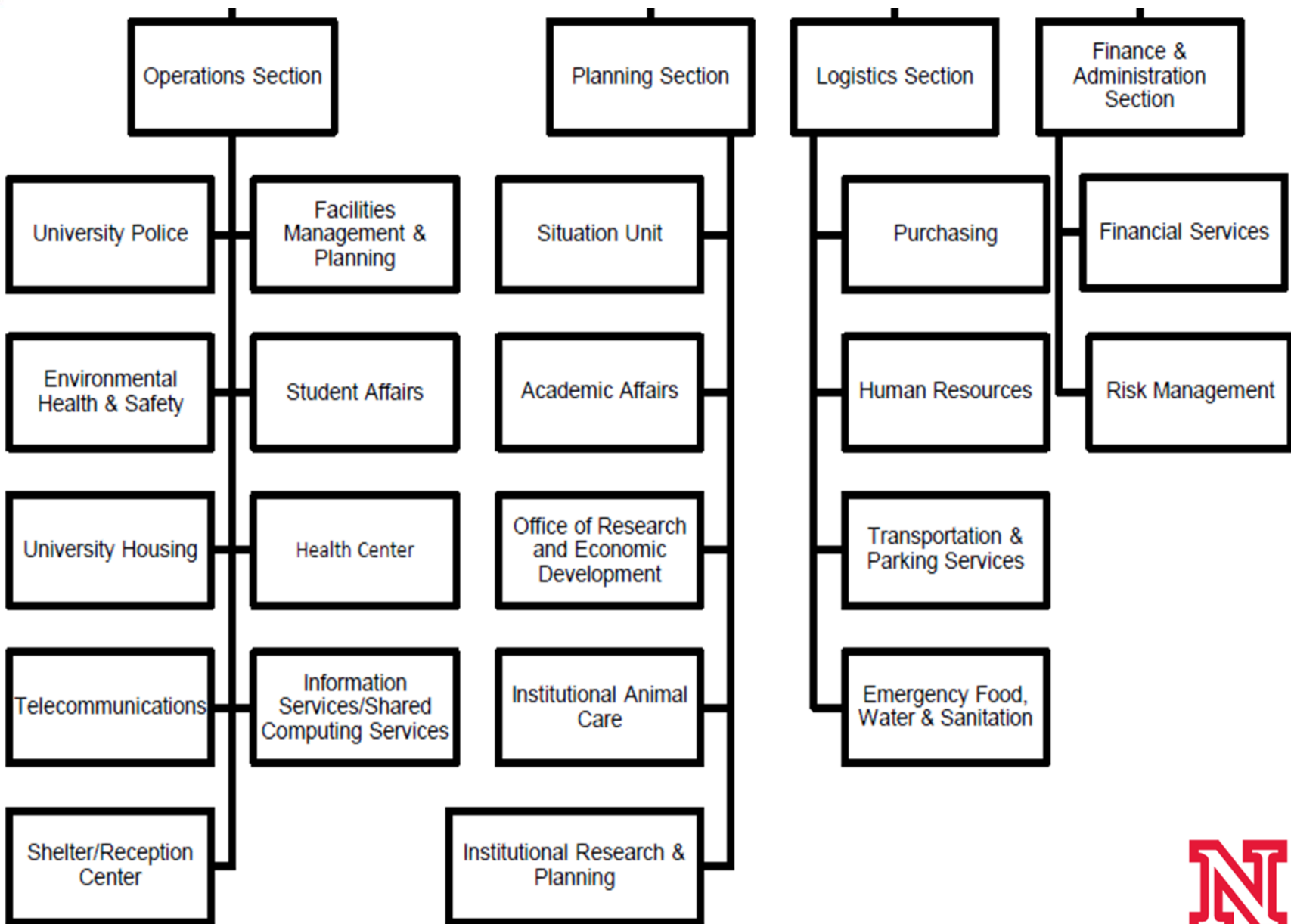


# UNL Emergency Operations Plan



# UNL Emergency Operations Plan





# Working with the Operations Team

- Remember: You are the expert!
- How will the UNL Emergency Operations Center (EOC) know the needs of your laboratory?
  - Do you have a Building Emergency Plan on file?
  - Do you have a Continuity of Operations Plan on file?
  - How will you communicate your needs?
- Key point: inter-departmental priorities should be discussed prior to the disaster





# Online – Faculty, Staff & Departments

- “Have a Plan”
  - [Emergency Procedures Quick-list](#)
  - [Business Continuity Planning Template](#)
  - [Building Emergency Action Plan Template](#)
  - [Faculty Guidance for Incident Response](#)
  - Environmental Health and Safety [ehs.unl.edu](http://ehs.unl.edu)
    - Safety Operating Procedures
    - EHS Training Materials and documents
  - [UNL Alert](#)



# Testing the Plan

- Types of Exercises
  - Drill
  - Seminar or Orientation
  - Workshop
  - Tabletop
  - Functional
  - Full Scale

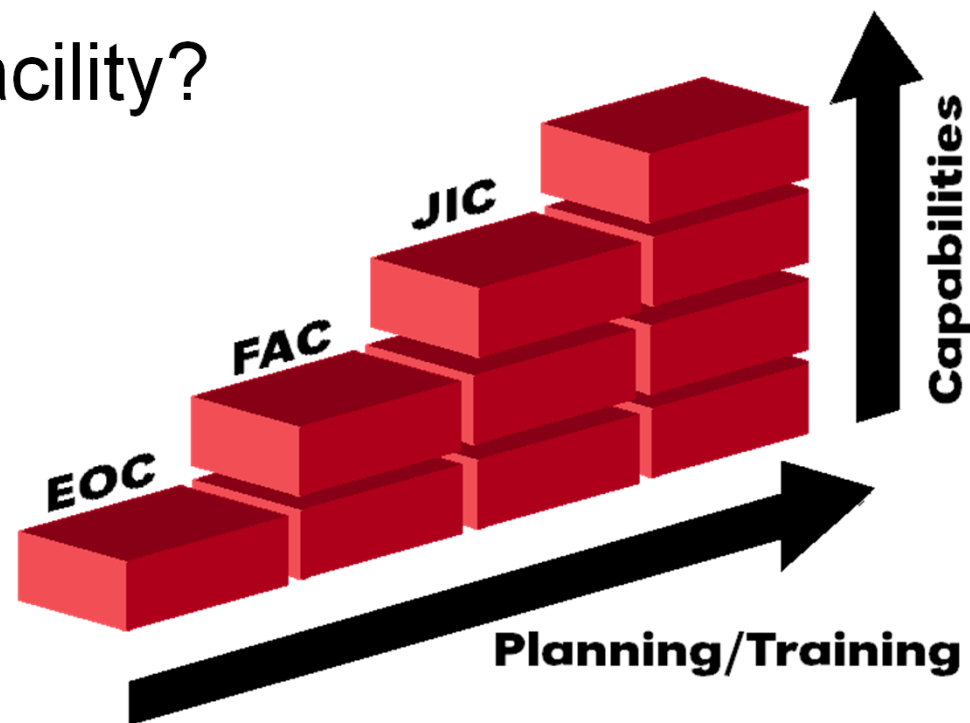


# Testing the Plan



# Team Challenge 2015

- EOC – Emergency Operations Center
- FAC – Family Assistance Center
- JIC – Joint Information Center
- Your Facility?





Questions, Comments,  
Concerns?



# Ancient Magic Trick

- Magic and Science of Organization
- Oath
- Demonstration
- Explanation



# TABLE TOP EXERCISE



# Tabletop Exercise

- Scope
  - Facility
  - Location
  - Players
- Objectives
- Scenario
- Exercise Play
- After Action Review
- Improvement Plan







---

© 2007, THE BOARD OF REGENTS OF THE  
UNIVERSITY OF NEBRASKA. ALL RIGHTS RESERVED.

---